

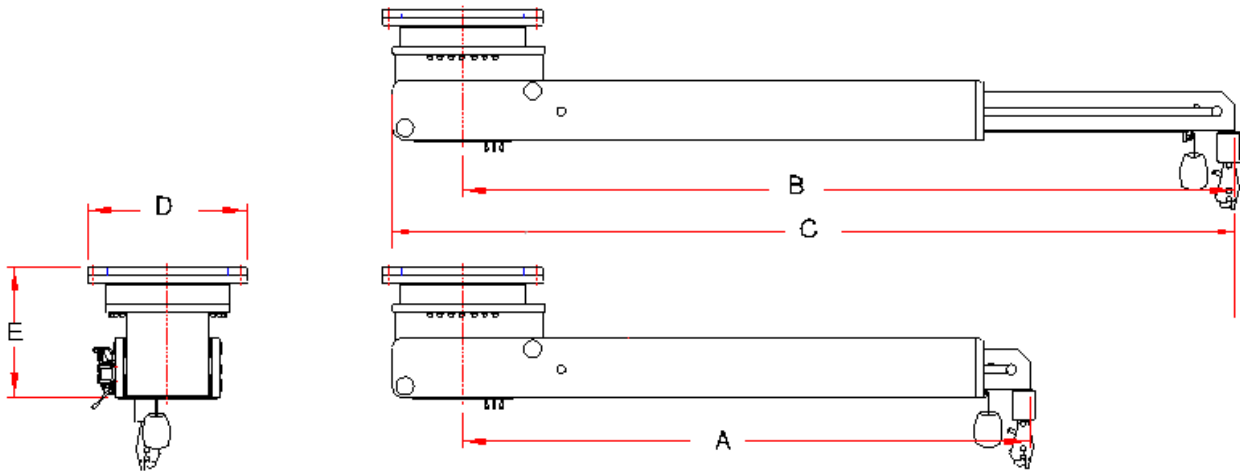


Tender Garage Cranes Overhead Rotating Style

- Tender garage Crane features capacities from 2,500lb (1134kg) to 20,000lb (9070kg), at all boom angles. The hydraulic linear winch system built into the extension maintains constant cable length during extension and retraction of extension. Features self-limiting travel, (two-block protection) self-locking load holding capabilities, L.O.P. (automatic Lifting Overload Protection), quiet, smooth cable payout and retrieval.
- 100-degree hydraulic power slewing.
- Radial roller/ball slewing bearing attachment.
- Weld-in cylindrical style pedestal base, steel construction T-30 Tylaska stainless steel load-release safety hook.
- Spectron 12+ composite fiber line.
- 3-function, 24V DC low voltage electrical, wireless joystick operated proportional remote control. Provided with optional-use 6-meter wanderleads. System requires 230V AC power to the control box from the boat. Vickers DO-3 type Proportional hydraulic valves with manual overrides are used with the wireless joystick proportional remote control system.
- Interface with the ship's central hydraulic system, includes the central hydraulic system interface kit (SV-Valve and high-pressure in-line filter housing with 3-micron element).
- Swagelok stainless steel hydraulic fittings and hard-tubing.
- 5086 aluminum plate constructions, all exposed welds & surfaces are faired.
- Stainless steel components are 316-L and mirror polished.
- ACM Composite high load bushings at all stainless load pin to aluminum contact points to prevent corrosion and hole elongation.
- 24V DC LED Floodlight integrated into the primary boom section.
- System is finished to Nautical Structures' highest level of quality. The structure is acid zinc washed, 2-part epoxy primed, all exposed welds & surfaces are faired, 2-part epoxy primed again, two top coats of urethane paint standard colors; Snow white, Off white or Matterhorn white.
- 12-month limited warranty is included. Hydraulics, electrical and labor are included (see warranty for details).



**Tender Garage Cranes
Overhead Rotating Style**
2500lb (1134kg) to
20000lb (9070kg)



S/N	Style	Length from Rotation				Length		Width		Height	
		"A" Retracted		"B" Extended		"C"		"D" OAW		"E" OAH	
		mm	in	mm	in	mm	in	mm	in	mm	in
15348	OHR	3505.20	138.00	4775.20	188.00	5270.50	207.50	990.60	39.00	809.63	31.88