



EZ-Systems Knuckle-Boom Type Hydraulic Deck Crane

For over a decade the EZ-Systems Hydraulic Deck Crane has proven to be of the highest state-of-the-art yacht crane technology in an aesthetically pleasing design. Nautical Structures manufactures the knuckle-Boom crane design in capacities from 2,500lb to over 20,000lb (1,134kg to 9,070kg), with and without hydraulic telescoping boom sections.

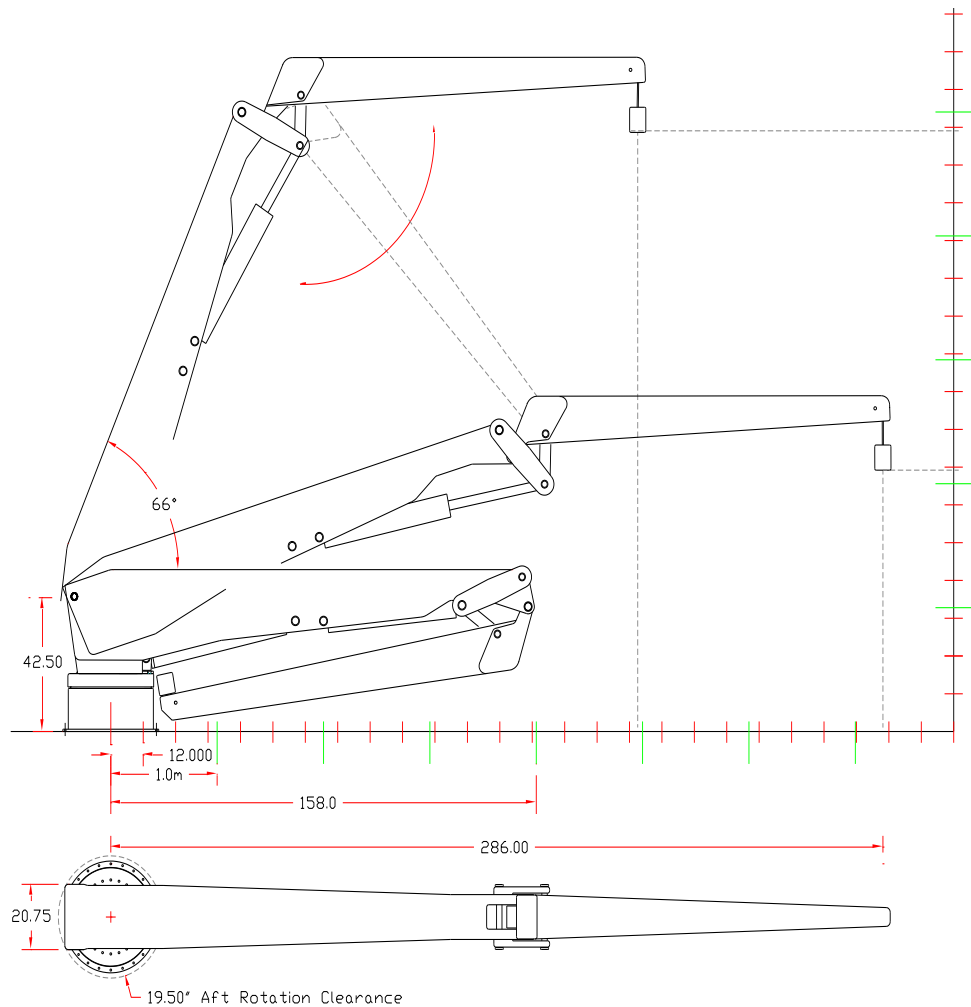
The EZ-7700-KB shown above is a 7700lb / 3492kg capacity crane featuring a fold-under boom design. The crane has been engineered and designed as a true yacht crane, not just another marinated commercial crane. The EZ-Knuckle-Boom Crane's aluminum boom is capable of being loaded to its full safe working load capacity in any position without restriction. The intelligent engineering inherent in this design allows distributed load-deflection across the boom during moments of high dynamic loading, reducing the amount of shock-loading transmitted to the deck. Virtually silent-operating, our Hydraulic Linear Winch system, a totally non-fouling winch design reflects the innovative and dependably safe operating characteristics built into the boom. This feature adds the additional element of operational safety as the winch travels with the boom during operation of the crane. This prevents any possibility of two-blocking the system causing damage to the composite line. In applications complying with the MCA Mega Yacht Code, the Linear Winch is capable of being placed into a free-fall condition with operational control by the operator. The crane features 330° hydraulic power rotation providing the ultimate in tender-handling convenience. Control of the crane is with a remotely operated wireless joy-stick proportional control on a removable pendant. Manual hydraulic controls are also provided, located behind a hinged and latched access panel. A low-profile cylindrical style pedestal base is the typical mount for the EZ-Systems Knuckle-Boom Crane, although a standpipe mount may also be used in applications with GRP constructed vessels.

The EZ-Systems Knuckle-Boom Crane is finished to our highest standards. The aluminum structure is etched and then primed with a two-part epoxy primer. The system is faired smooth, and then primed again. The crane is hand sanded, then moved into our heated finish booth where it is coated with a two-part urethane spray-applied paint finish. Our standard colors are Matterhorn white, Off white and Snow white. All other colors will be special order and quoted upon request. With MCA-LY2 Mega Yacht Code compliance, the crane system is static load tested to 2.2 x design load and then dynamic load tested to 1.1 x design load. Warranty: 1-Year including materials, electric, hydraulics and labor. See warranty for details.



EZ Deck Crane Hydraulic Knuckle Boom Series 2,500/20,000 lb 1134/9070 kg SOLAS

Cylindrical style pedestal bases are required and will be configured for specific applications. Floating-Flange standpipe mounting is available for GRP constructed vessels. Standpipe diameters will vary depending on the actual moment capacity of the crane.



Mechanical Specifications	Electric – hydraulic specifications																		
Hydraulic Boom Luffing: 0° to 58° with full load capacity.	24V DC Supply on a 20 amp breaker.																		
<table border="0"> <tr> <td><i>Crane</i></td> <td><i>Boom Angles</i></td> <td><i>Outreach</i></td> </tr> <tr> <td>Reach</td> <td>66° / 0°</td> <td>195" / 495 cm</td> </tr> <tr> <td>Reach</td> <td>45° / 0°</td> <td>250" / 635 cm</td> </tr> <tr> <td>Reach</td> <td>30° / 0°</td> <td>274" / 696 cm</td> </tr> <tr> <td>Reach</td> <td>15° / 0°</td> <td>294" / 747 cm</td> </tr> <tr> <td>Reach</td> <td>0° / 0°</td> <td>298" / 757 cm</td> </tr> </table>	<i>Crane</i>	<i>Boom Angles</i>	<i>Outreach</i>	Reach	66° / 0°	195" / 495 cm	Reach	45° / 0°	250" / 635 cm	Reach	30° / 0°	274" / 696 cm	Reach	15° / 0°	294" / 747 cm	Reach	0° / 0°	298" / 757 cm	24V DC Wireless Joy-stick operated proportional control. * Manual back-up Hydraulic control.
<i>Crane</i>	<i>Boom Angles</i>	<i>Outreach</i>																	
Reach	66° / 0°	195" / 495 cm																	
Reach	45° / 0°	250" / 635 cm																	
Reach	30° / 0°	274" / 696 cm																	
Reach	15° / 0°	294" / 747 cm																	
Reach	0° / 0°	298" / 757 cm																	
Aft rotation clearance: 19.50" / 49.5 cm 300° hydraulic power rotation.	15 Hp HPU, 3000 psi / 203 bar, 7 gpm / 26 lpm output. 20 Hp HPU, 3000 psi / 203 bar, 9 gpm / 34 lpm output. Fluid type: AW-68 or AW-34, ISO quality 17/15/12																		
Hydraulic Linear Winch system. Rigged 6:1 with wire rope or Spectron 12 Plus composite-fiber line. Stainless Steel Certified Load-Release Hook optional.	Available Rated Capacities																		
Cable pay-out: (Enhanced pay-out is available) 24' / 7.31m	EZ-2500-KB: 2,500lb / 1136kg Up to 50,000 ft/lb EZ-4000-KB: 4,000lb / 1818kg Up to 80,000 ft/lb EZ-5500-KB: 5,500lb / 2500kg Up to 100,000 ft/lb EZ-6600-KB: 6,600lb / 3000kg Up to 150,000 ft/lb EZ-8800-KB: 8,800lb / 4000kg Up to 200,000 ft/lb																		
Crane weight: EZ-4000-KB: 2900lb / 1320kg	Foot-pound capacity; maximum reach x lifting capacity.																		
Weight, pedestal base (average): 340lb / 155kg	12 Month limited warranty.. © 2014- NSI																		