



### **EZ Deck Crane Hydraulic Single Telescopic Knuckle Boom Series SOLAS**

For over a decade the EZ-Systems Hydraulic Deck Crane has proven to be of the highest state-of-the-art yacht crane technology in an aesthetically pleasing design. Nautical Structures manufactures the knuckle-Boom crane design in capacities from 2500lb to over 20,000lb (1134kg to 9070kg), with and without hydraulic telescoping boom sections. The EZ-7,700-KB shown above is a 7,700lb / 3492kg capacity crane featuring a fold-under boom design. The crane has been engineered and designed as a true yacht crane, not just another maritized commercial crane. The EZ-Knuckle-Boom Crane's aluminum boom is capable of being loaded to its full safe working load capacity in any position without restriction. The intelligent engineering inherent in this design allows distributed load-deflection across the boom during moments of high dynamic loading, reducing the amount of shock-loading transmitted to the deck. Virtually silent-operating, our Hydraulic Linear Winch system, a totally non-fouling winch design reflects the innovative and dependably safe operating characteristics built into the extending boom. This feature adds the additional element of operational safety as the winch travels with the boom extension during operation of the crane. This prevents any possibility of two-blocking the system damage to the cable.

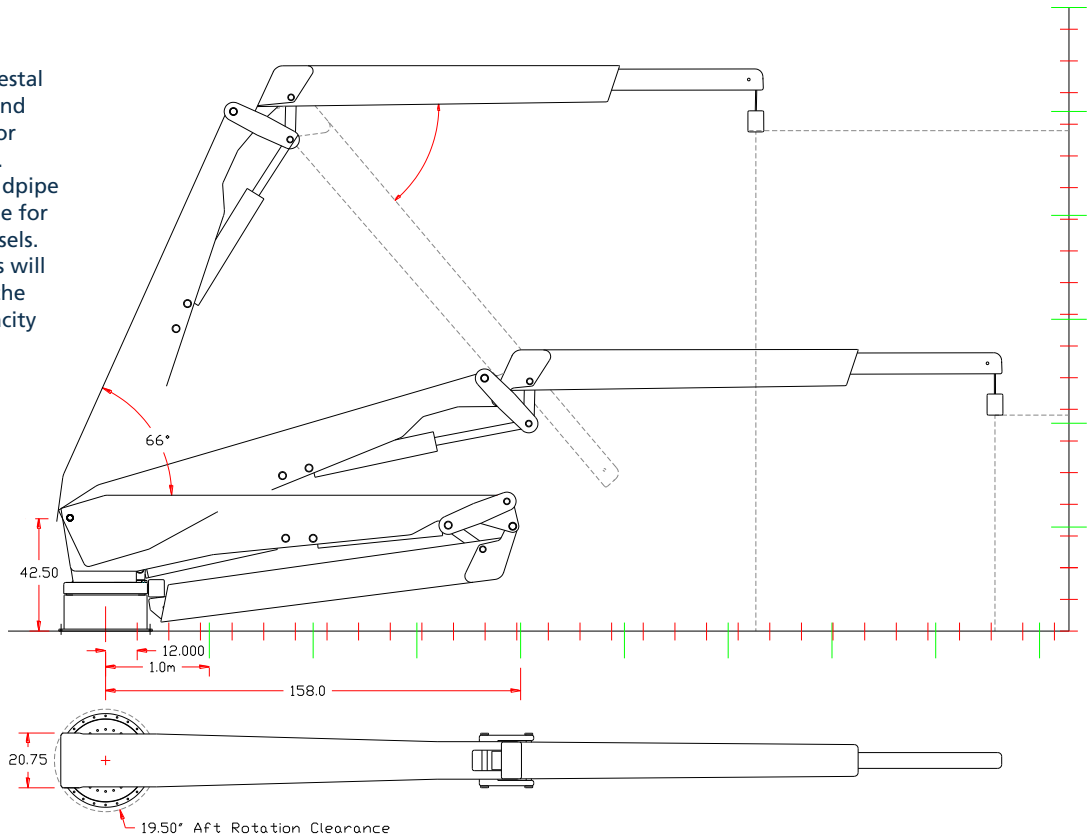
In applications complying with the MCA Mega Yacht Code, the Linear Winch is capable of being placed into a free-fall condition with operational control by the operator. The crane features 330° hydraulic power rotation providing the ultimate in tender-handling convenience. Control of the crane is with a remotely operated wireless joy-stick proportional control on a removable pendant. Manual hydraulic controls are also provided, located behind a hinged and latched access panel. A low-profile cylindrical style pedestal base is the typical mount for the EZ-Systems Knuckle-Boom Crane, although a standpipe mount may also be used in applications with GRP constructed vessels. The EZ-Systems Knuckle-Boom Crane is finished to our highest standards. The aluminum structure is etched and then primed with a two-part epoxy primer. Then the system is faired smooth, and then primed again. The crane is hand sanded, then moved into our heated finish booth where it is coated with a two-part urethane spray-applied paint finish. Our standard colors are Matterhorn white, Off white and Snow white. All other colors will be special order and quoted upon request. With MCA-LY2 Mega Yacht Code compliance, the crane system is static load tested to 2.2 x design load and then dynamic load tested to 1.1 x design load.

Warranty: 1-Year including materials, electrical, hydraulic and labor. See warranty for details.



**EZ Deck Crane**  
**Hydraulic Single Telescopic**  
**Knuckle Boom Series**  
 2,500/20,000 lb 1134/9070 kg  
 SOLAS

Cylindrical style pedestal bases are required and will be configured for specific applications. Floating-Flange standpipe mounting is available for GRP constructed vessels. Standpipe diameters will vary depending on the actual moment capacity of the crane.



Mechanical Specifications				Electric – hydraulic specifications	
Hydraulic Boom Luffing: 0° to 58° with full load capacity.				24V DC Supply on a 20 amp breaker.	
<i>Crane</i>	<i>Boom Angle</i>	<i>Retracted</i>	<i>Extended</i>	24V DC Joy-stick operated proportional control. Manual control back-up.	
Reach	60°	103in / 262cm	133in / 338cm	Wireless proportional control is available as an option.	
Reach	45°	140in / 355cm	182in / 462cm	15 Hp HPU, 3000 psi / 203 bar, 7 gpm / 26 lpm output.	
Reach	30°	166in / 422cm	219in / 556cm	20 Hp HPU, 3000 psi / 203 bar, 9 gpm / 34 lpm output.	
Reach	15°	182in / 462cm	240in / 609cm	Fluid type: AW-68, ISO quality 17/15/12	
Reach	0°	188in / 477cm	248in / 630cm	<b>Available Rated Capacities</b>	
Aft rotation clearance: 22" / 56cm 360° hydraulic power rotation.					
Hydraulic Linear Winch system. Rigged 7:1 with wire rope or Spectron 12 Plus composite-fiber line. Stainless Steel Certified Load-Release Hook optional.				EZ-2500-KB: 2,500lb / 1134kg Up to 50,000 ft/lb	
Cable pay-out: 24' / 7.31m				EZ-4000-KB: 4,000lb / 1814kg Up to 80,000 ft/lb	
Crane weight: EZ-4000-KB-EX: 2800lb / 1272kg				EZ-5500-KB: 5,500lb / 2494kg Up to 100,000 ft/lb	
Weight, pedestal base (average): 340lb / 155kg				EZ-6500-KB: 6,600lb / 2993kg Up to 150,000 ft/lb	
				EZ-8000-KB: 8,000lb / 3628kg Up to 200,000 ft/lb	
				Foot-pound capacity; maximum reach x lifting capacity.	
				12 Month limited warranty. © 2014- NSI	