



**OH-Type HYDRAULIC OVERHEAD FULL BEAM CRANES:** Nautical Structures manufactures overhead beam crane systems specific and unique to each tender-handling application. The OH-Type Overhead beam Crane is a full-beam-width crane system that utilizes the full beam-width of the vessel to stow and support the cantilevered moment-load of the cranes. The beam-sections are supported with a series of wheel-sets and are typically transported outboard with a tensioned chain-drive system, or with a specialized linear-winch drive system. A contained hydraulic linear winch is installed into each end of the crane beam, providing service to both sides of the vessel. The winches incorporate a self-stowage feature that conceals the hook and weight assembly when the crane is stowed.

One of Nautical Structures' most notable beam crane projects was an 8000-pound (3600-Kg) capacity full beam width system delivered to the Delta Marine 164-ft (50-m) M.Y. Triton. This aluminum overhead crane system integrated into the yacht's composite superstructure, and launches the yacht's tenders to both the starboard and port sides. One unique feature of this particular system is its designed capability to launch the tenders while the yacht is running underway at cruise speeds.

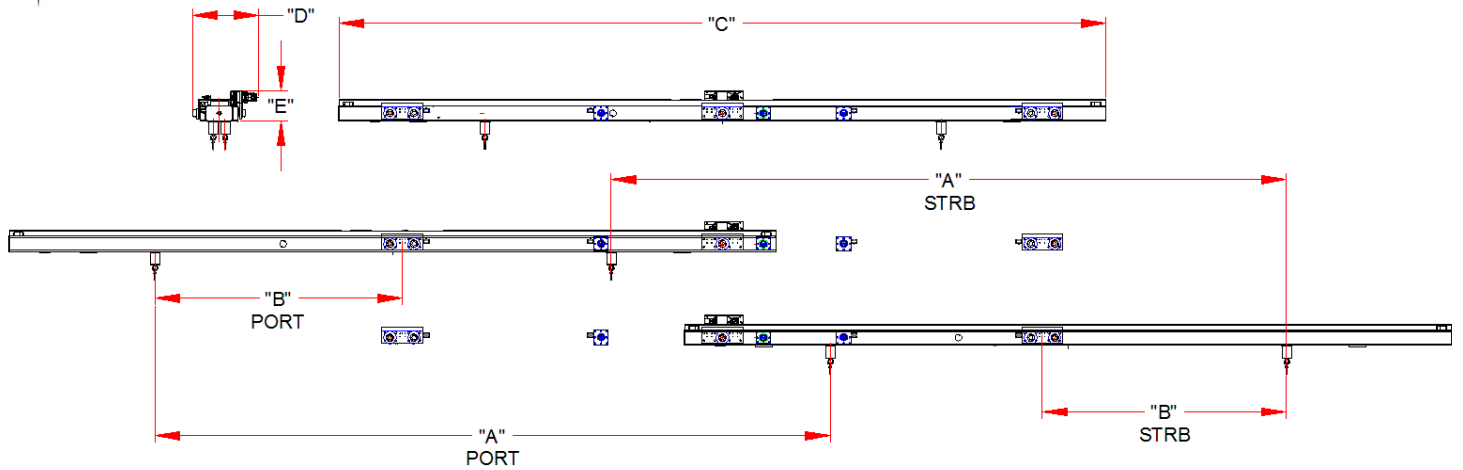
These cranes had to be engineered to not only handle the vertical hoisting loads, but also the side-loading imparted while the tender is being pulled through the water. A towing boom arrangement was developed to mitigate this potential, but the cranes had to be designed for the worst-case loading scenario nonetheless. Nautical Structures designs and builds Overhead Beam Cranes and Tender-Garage crane systems specific for new-build and refit projects, worldwide.



# Tender Garage Cranes

## Overhead Full Beam Cranes

2,500lb (1,134kg) to 20,000lb (9,040kg)



S/N	STYLE	LENGTH						WIDTH		HEIGHT	
		"A" Tavel		"B" OAL		"C" Closed		"D" OAW		"E" OAH	
		mm	in	mm	in	mm	in	mm	in	mm	in
18706	OH	3454.40	136.00	12141.20	478.00	6959.60	274.00	708.66	27.90	443.48	17.46
18447	OH	3683.00	145.00	14833.60	584.00	9184.64	361.60	670.56	26.40	388.62	15.30
19826	OH	3784.60	149.00	17983.20	708.00	11553.83	454.88	698.50	27.50	436.63	17.19
19426	OH	3784.60	149.00	17970.50	707.50	11554.46	454.90	952.50	37.50	317.50	12.50
15325	OH	3810.00	150.00	7797.80	307.00	8643.62	340.30	660.40	26.00	360.43	14.19
15119	OH	3810.00	150.00	14782.80	582.00	8636.00	340.00	660.40	26.00	493.78	19.44
18154	OH	4521.20	178.00	16383.00	645.00	8643.62	340.30	698.50	27.50	333.50	13.13
16376	OH	4521.20	178.00	16383.00	645.00	8643.62	340.30	698.50	27.50	447.80	17.63
18670	OH	5283.20	208.00	17526.00	690.00	7848.60	309.00	952.50	37.50	292.10	11.50

7301 114th Avenue North • Largo, Florida 33773

Phone: (727) 541-6664 • Facsimile: (727) 541-6353 • North America Toll Free: (888) 541-6664

Email: [sales@nautical-structures.com](mailto:sales@nautical-structures.com) • [www.nautical-structures.com](http://www.nautical-structures.com)