

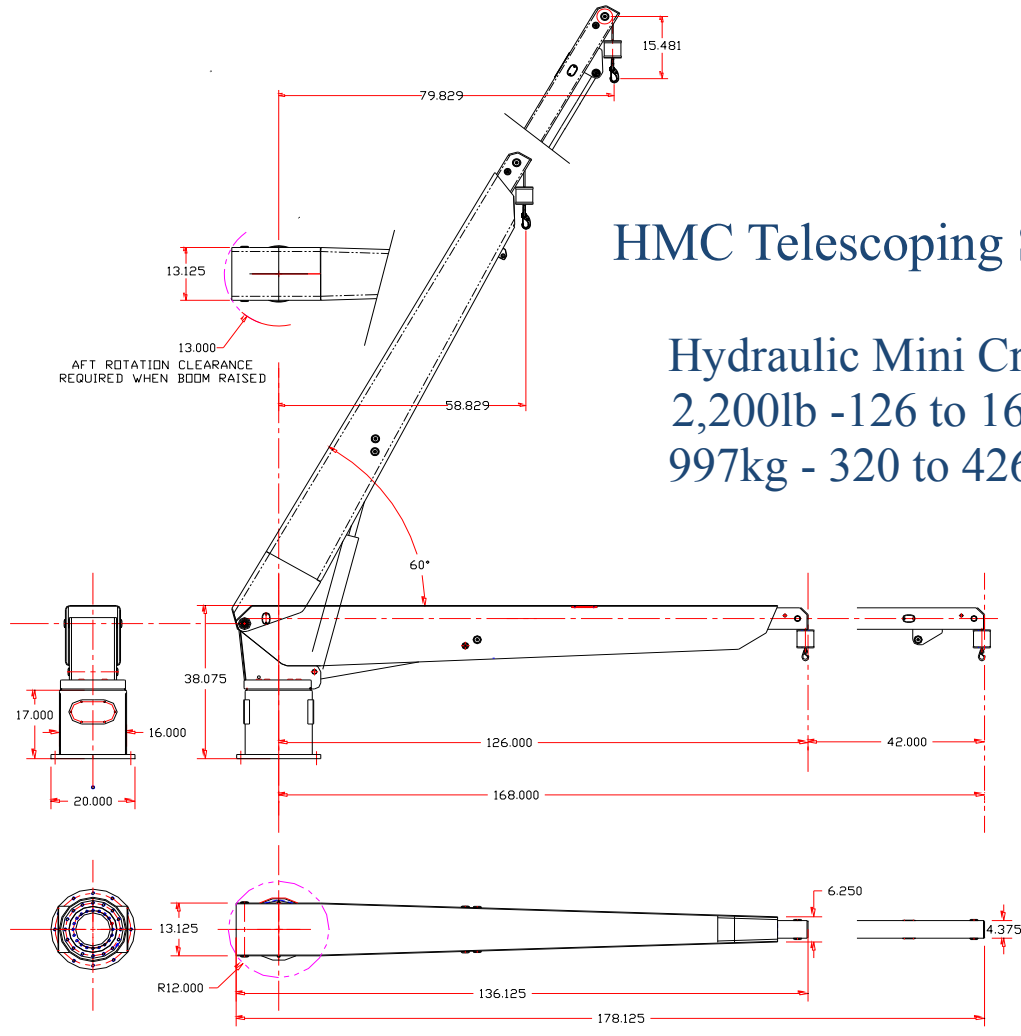


- 2,200lb (998kg) maximum hoist capacity, capable of the full rated capacity in any position without restriction.
- 126in (320cm) Stowed dimension, with hydraulic telescoping boom extension fully retracted, measured from the center of rotation to the end of the boom.
- 168in (426cm) Maximum reach with hydraulic telescoping boom fully extended.
- Hydraulic linear winch, a non-fouling design built into the extension (maintains constant cable length during extension and retraction of the boom extension for enhanced control). Features self-limiting travel, (two-block protection) self-locking load holding capabilities, L.O.P. (automatic lifting overload protection) for safe smooth, quiet cable payout and retrieval.
- Hydraulic boom luffing, capable of the full rated capacity at any boom angle.
- Aluminum hydraulic cylinders with integrated safety locking valves for safe operation, enhanced protection against corrosion and reduced weight.
- Hydraulic power rotation/slewing for enhanced control and ease of operation.
- Removable, waterproof hand held remote with weather connectors & wander-lead.
- An aluminum Pedestal base deck mount, cylindrical (round) or pyramid (square) design. Also available is an optional aluminum hydraulic power rotating/slewing through deck mount standpipe. Hydraulic power unit, five-horsepower with tray for remote mount.
- The davit system is finished to our Nautical Structures high level of quality with urethane paint products. Our standard colors are Matterhorn white, Off white, and Snow white. All other colors will be special order and quoted upon request.
- System assembled and dynamic load tested prior to shipment.
- 1-YEAR WARRANTY including materials and workmanship, electrical, hydraulic and labor, see warranty for details.

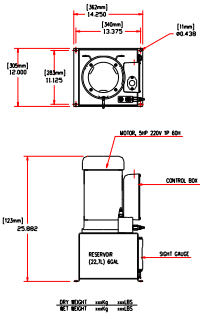


HMC Telescoping Series

Hydraulic Mini Crane
 2,200lb - 126 to 168in
 997kg - 320 to 426cm



Example of cylindrical [round] pedestal base; also available are a pyramid [square] or a hydraulic power rotating/ slewing through deck mount standpipe



MECHANICAL SPECIFICATIONS	ELECTRIC – HYDRAULIC SPECIFICATIONS
Hydraulic Boom Luffing from 0° through 58°. 3.5ft (1m) Hydraulic Boom Extension	230V AC, 60 Hz, 1 Ph. 230V AC, 50 Hz, 1 Ph. Special order.
Reach (Max. at 0° position): 126 – 168in (320-426cm)	Remote control switch is wired to a 20ft/ 6.1m removable pendant.
Reach (Minimum at 60° position): 58-79in (147cm-200cm) Aft rotation clearance: 13in / 33cm	5 Hp Hydraulic power unit, 3000 psi / 203 bar, 0.5 gpm - 1.0 gpm / 1.8 lpm - 3.8 lpm output. Fluid type: QS-888, ISO quality 17/15/12
Hydraulic Linear Winch system. Rigged 6:1 with stainless steel wire rope, brass weight and stainless steel safety snap hook.	RATED CAPACITY
Cable pay-out: 21ft / 6.4 m	HMC 2200 -126-168 2,200 / 998kg
System weight, HMC– 2200 EX: 1100lb / 499kg	HMC 2200: 30,800 ft/lb Maximum moment capacity.
System weight, Pedestal Base 137lb / 62kg 8 in. / 20.3 cm Diameter standpipe weight: 270lb / 122kg	12 Month limited warranty. © 2014 - NSI

7301 114th Avenue North • Largo, Florida 33773
 Phone: (727) 541-6664 • Facsimile: (727) 541-6353 • North America Toll Free: (888) 541-6664
 Email: sales@nautical-structures.com • www.nautical-structures.com